



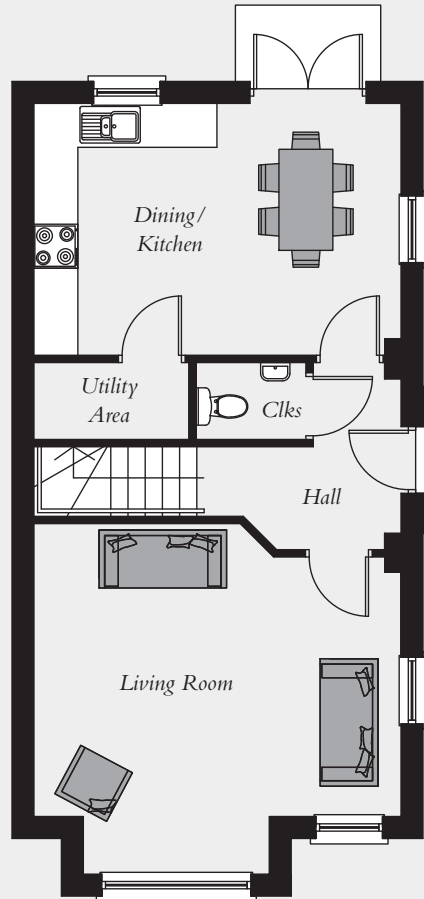
Computer visual

The Hounslow

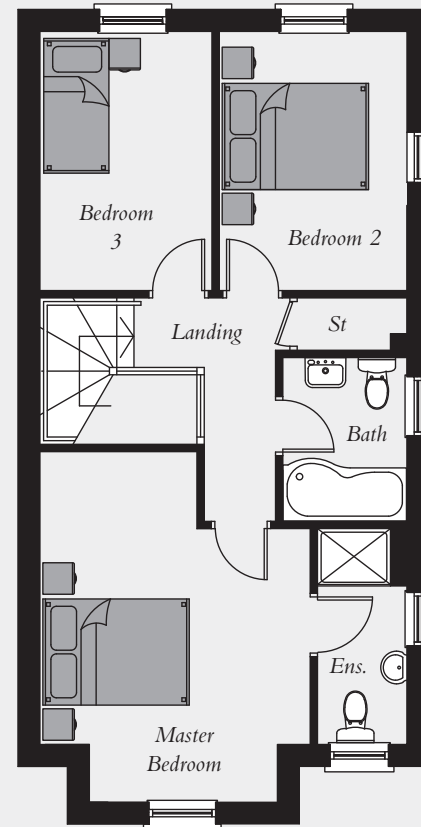
Total Floor Area: 1,090 sq ft approx.

**ATHERTON
SQUARE**

Tandragee Road, Lurgan



Ground Floor



First Floor

The Hounslow

Total Floor Area: 1,090 sq ft approx.



Ground Floor

- Entrance Hall
- Living (max inc. bay).....16'5" x 15'8"
- Kitchen/Dining.....16'5" x 11'3"
- Utility Area.....6'11" x 3'5"
- Cloakroom

First Floor

- Master Bed (max inc. bay) 15'8" x 11'11"
- Ensuite.....10'4" x 4'0"
- Bedroom 2.....10'4" x 8'3"
- Bedroom 3 (max).....11'7" x 7'8"
- Bathroom.....7'4" x 5'7"

All dimensions are approximate and 3D computer generated images are for illustration purposes only, both of which may be subject to change.