

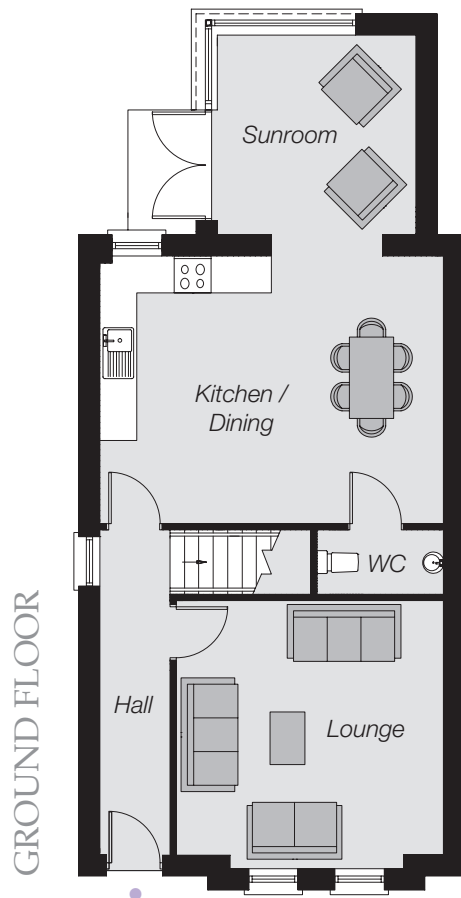
BF1.1



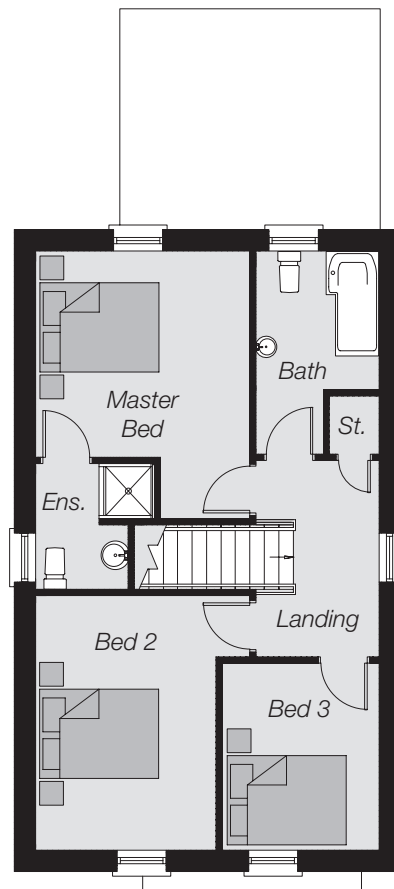

**BUSHFORDE
MEADOWS**
- ANTRIM -


Garages are optional on specific plots at an additional cost, and subject to stage of construction.

Computer visual.



GROUND FLOOR



FIRST FLOOR

TOTAL FLOOR AREA

1,260 sq. ft. approx.



Telephone 028 9446 6777
www.country-estates.com



GROUND FLOOR

Entrance Hall (with separate WC)
Lounge 14'2" x 13'11" (max)
Kitchen / Dining 18'2" x 14'2"
Sunroom 10'5" x 10'4"

FIRST FLOOR

Master Bedroom 11'3" x 10'10" (min)
Ensuite
Bedroom 2 13'5" x 9'6" (min)
Bedroom 3 9'10" x 8'3"
Bathroom

These particulars do not constitute any part of an offer or contract. None of the statements contained in these particulars are to be relied on as statements or representations of fact and intending purchasers must satisfy themselves by inspection or otherwise as to the correctness of each of the statements contained in these particulars. All measurements of area are quoted as Net Sales Area which is calculated in accordance with the RICS Code of Measuring Practice (6th Edition) APP 21. Configurations of kitchens, bathrooms and wardrobes may be subject to alteration from those illustrated without prior notification. Purchasers should satisfy themselves as to the current specification at the time of booking. The Vendor does not make or give, and neither the Selling Agent, nor any person in their employment, has any authority to make or give any representation or warranty whatever in relation to any property. Computer visuals are for illustration only. Plans are not to scale and all dimensions shown are approximate.



www.laganhomes.com